

HU Library News

Here is this month's Hiroshima University Library news!

Monthly

May
2024

Published : Hiroshima University Libraries www.lib.hiroshima-u.ac.jp



FEATURE

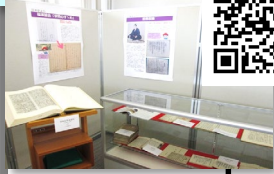
A Simple Illustration of Central Library ~ 1st Floor

We will introduce Central Library, with a collection of about 1.6 million books and various facilities!
(You can see more details through the QR codes!)

Book Post 

 **Community/ International Plaza**

Space for displays



Lalala Cafe



Newly Arrived Journals

Entrance

Entry Gate


Circulation Counter

You can find everything in regards to using the library here!

Self-Checkout Machine for Books.



Key machine for private study rooms.

 **Writing Center**

You can join writing tutorials to improve your academic writing!



BIBLA Group Space



Stack Entrance 

Library Hall

Can be used for seminars, etc. with groups of 100 spectators.



photogenic Atrium

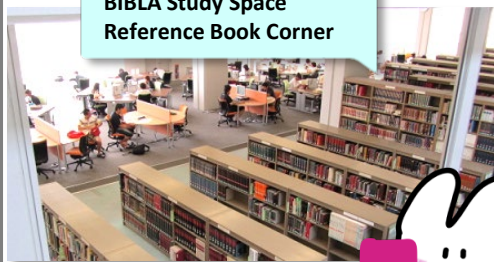


 **PC for searching**

English Extensive Reading



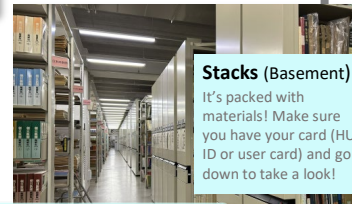
BIBLA Study Space Reference Book Corner



Copiers · Printers



Newspaper Corner (JCS Lounge)



Stacks (Basement)
It's packed with materials! Make sure you have your card (HU ID or user card) and go down to take a look!



If you go up the stairs, you can find...

**Books are on the 2nd floor,
Journals are on the 3rd.**



← Please search in OPAC (holdings search) for the location of materials!



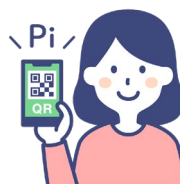
INFORMATION

May's Announcements

Cashless Payment Begins!

Central

West



Following the example of Hiroshima City campuses, from April 22nd cashless payment became available for copying and other fees at Central and West Libraries! You can now pay many fees by credit card, IC card, Smartphone application, or Other various cashless payment methods.



Check here for more information ↑



You can now browse Japan Knowledge Lib with no limit!

From April, the comprehensive database of full text Japanese dictionaries and encyclopedias "Japan Knowledge Lib" is available to use with no limits on simultaneous connections!

This means that many people can access it at the same time, such as during classes. You can also access the Dai Kanwa Jiten (a major kanji dictionary) through this service.

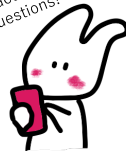


Orientation Video Available for Viewing

A Library orientation video is available for viewing. Targeted at new students enrolled in April, this orientation video introduces library services and explains how to use them. Check it out!



There are also practice questions!



Display 「Spread Your Wings to the World. The Power of Education.」

West

Kasumi

Higashi-Senda

Discover books by world leaders who have given lectures in the university-wide compulsory course for new undergraduate students "Introduction to University Education" at the displays in West, Kasumi and Higashi-Senda Libraries!



CLIP

This Month's Antique Book

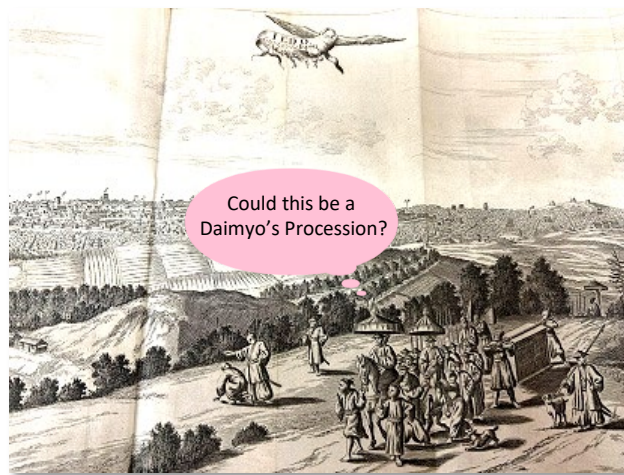
Voyages celebres & remarquables, faits de Perse aux Indes orientales

1727 Central Library Valuable Materials Collection

Upon the conclusion of trade relations between Germany and Russia and the Ottoman Empire, the German explorer and member of the trade delegation, Mandelslo (1616-1644) traveled alone through India, Sri Lanka, and Madagascar on his way home. During his travels he recorded this log, describing the journey. This is the French version, published in 1727 in Amsterdam.

There are a few accounts related to China and Japan, however Mandelslo himself never reached further East than Sri Lanka, so it is thought that he collected these accounts from other sources. In two copperplate engravings you can see Edo written as 「Iedo」 above two drawings, and though the style is inspired by Chinese traditions, based on the precise depiction of castles with towers, and other hints, it is clear that this is also an interesting source for understanding the exchange between Japan and Europe.

You can browse images of the 1719 Leiden version of This book through the international Japanese Cultural research center site here! →



Could this be a Daimyo's Procession?



CALENDAR

May's Calendar

Central Library

Sun	Mon	Tue	Wed	Thu	Fri	Sat
			1	2	3	4
5	6	7	8	9	10	11
12	13	14	15	16	17	18
19	20	21	22	23	24	25
26	27	28	29	30		

Kasumi Library

Sun	Mon	Tue	Wed	Thu	Fri	Sat
			1	2	3	4
5	6	7	8	9	10	11
12	13	14	15	16	17	18
19	20	21	22	23	24	25
26	27	28	29	30		

East Library

Sun	Mon	Tue	Wed	Thu	Fri	Sat
			1	2	3	4
5	6	7	8	9	10	11
12	13	14	15	16	17	18
19	20	21	22	23	24	25
26	27	28	29	30		

Higashi Senda Library

Sun	Mon	Tue	Wed	Thu	Fri	Sat
			1	2	3	4
5	6	7	8	9	10	11
12	13	14	15	16	17	18
19	20	21	22	23	24	25
26	27	28	29	30		

West Library

Sun	Mon	Tue	Wed	Thu	Fri	Sat
			1	2	3	4
5	6	7	8	9	10	11
12	13	14	15	16	17	18
19	20	21	22	23	24	25
26	27	28	29	30		

■ Closed all day

For more detailed library hours check here!→

